

Product Specifications

Electric Vehicle Charger

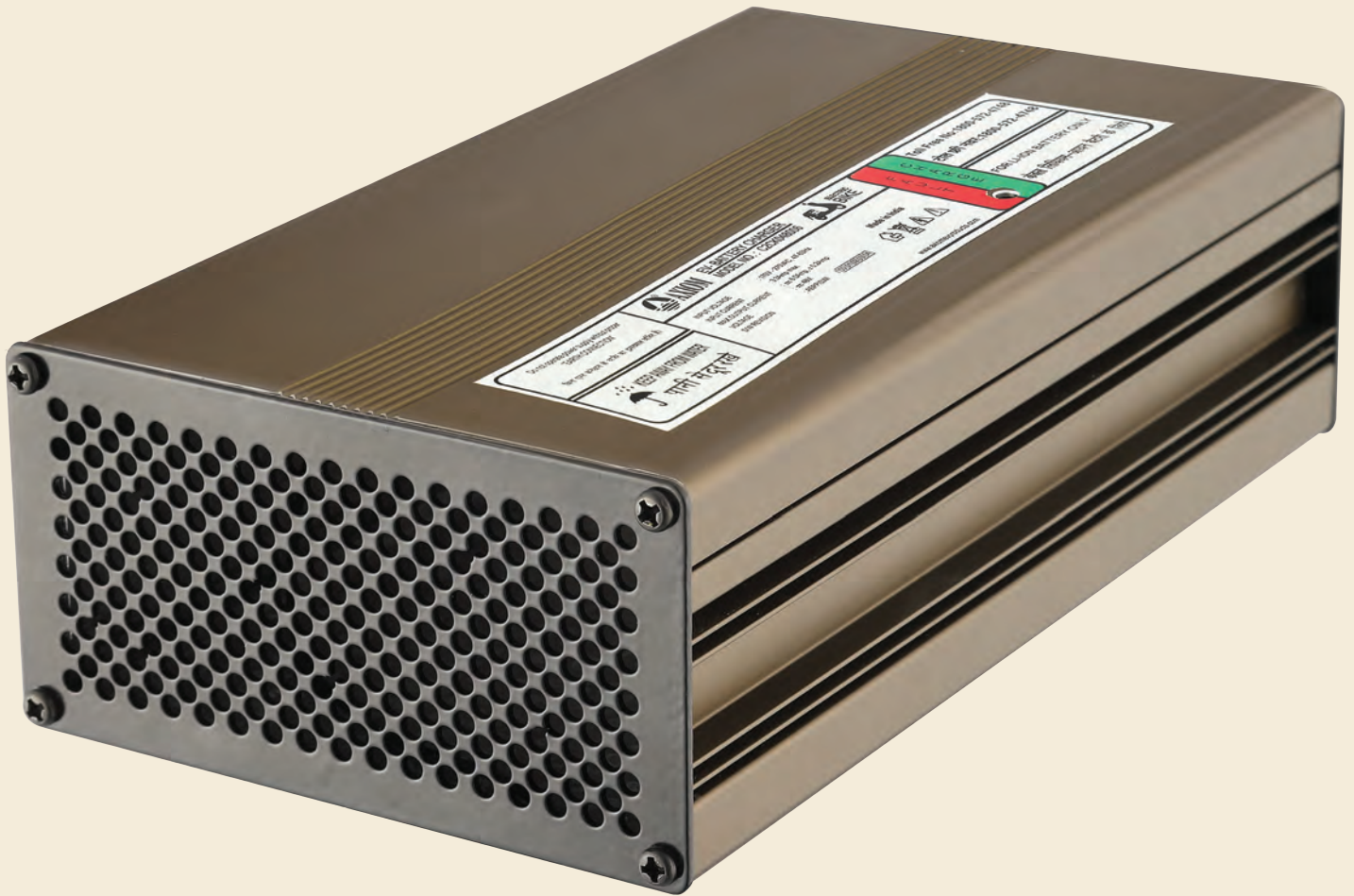
C2CK480006
48V/06A Charger

Type: Off-board Charger

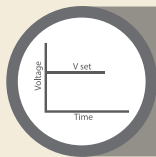
Applications: EV battery charger



C2CK480006 48V/06A Charger

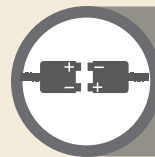


SALIENT FEATURES



Zero start mode

Charge a deep discharged battery automatically.



Battery reverse protection

Protects charger as well as battery when connected with reverse polarity.



One charger, multiple profiles

One charger with multiple charging profiles. Single charger for multiple voltage ranges.



Current mode design

Achieve highest reliability with current mode control topologies.



Light weight small size

Small form factor-easy to carry.



Audible Indication -buzzer

Audible indication for start of charge, full charge & fault.

C2CK480006 48V/06A Charger



SPECIFICATIONS

AC Input

Voltage - Range	: 170 - 275 VAC
Nominal Voltage	: 230 VAC
Frequency	: 47Hz -63 Hz
Maximum Current	: $\leq 4\text{Arms}@170\text{ VAC}$ & O/P at full load

DC Output

Maximum Voltage	: $60\text{V}\pm 0.5\text{V}$
Maximum Current	: $6\text{A}\pm 0.3\text{A}$
Line & Load Regulation	: $< 2\%$

Protections

Output over load	: Available
Output short Circuit	: Available
Output Over Voltage	: Available
Over Temp. with auto recovery	: Available
Reverse Polarity	: Available

Environmental

Operating Temperature	: 0°C to $+50^{\circ}\text{C}$
-----------------------	--

Mechanical

Dimensions	: L-240mm, W-150 mm, H-90mm
Weight	: 1.5 kg Appx

AXIOM ENERGY CONVERSION LTD.

Plot No.207/4&5, Phase-II, IDA, Cherlapally, Hyderabad-500051, Telangana, INDIA.

Toll Free: 1800-572-4748. Mobile: 99590 55158 Email:sales@axiomevproducts.com