

Product Specifications

Electric Vehicle Charger

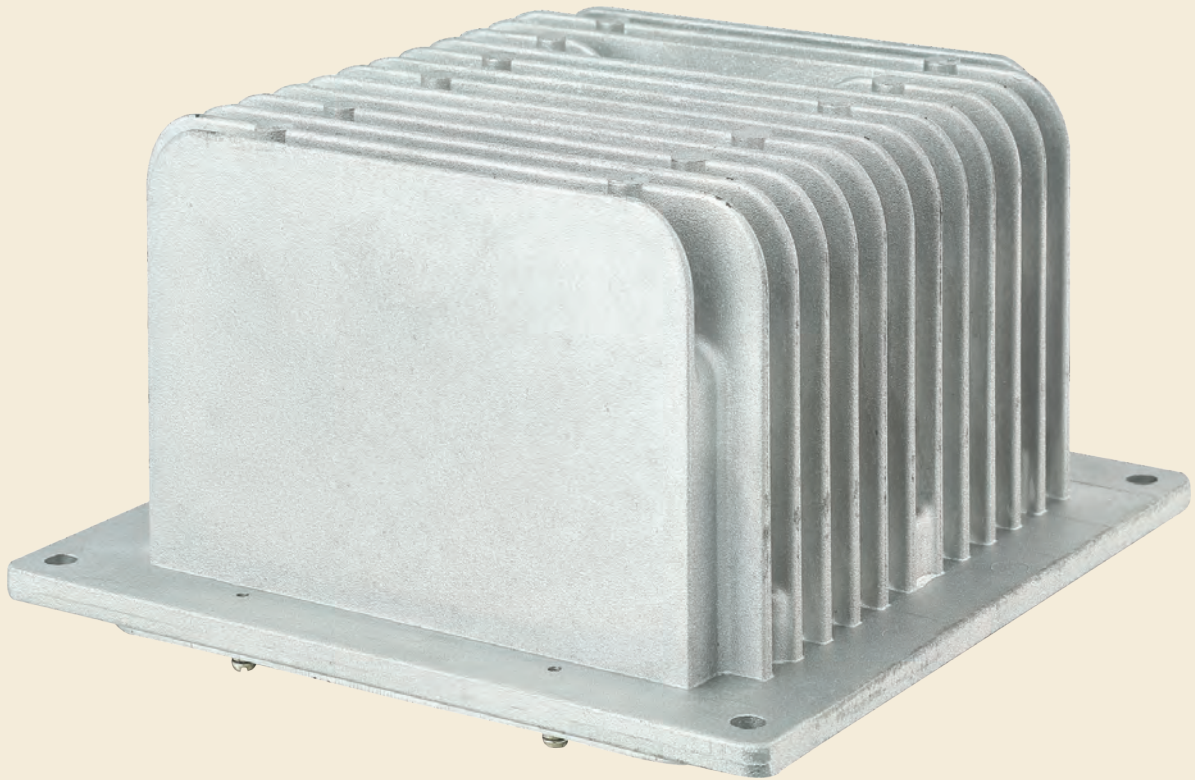
C1EE120030
48V-12V/30A DC-DC Converter

Type: 400W DC-DC Converter

Applications: E-Rickshaw & E-Auto



C1EE120030 48V-12V/30A DC-DC Converter



SALIENT FEATURES



Ingress protection

A water tight IP67 design for the plug & forgot experience.



EMI/EMC compliance design.

Electromagnetic interference is limited cotrolled.



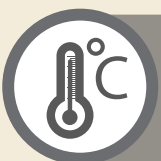
High power design

Continuous power delivery of 400W at 50°C, capable of handling miscellaneous loads.



Ignition switch protection

Ignition switch is protected through Inrush current limiting device.



Over temperature protection

Protects the converter from extreme temperatures with auto cut-off.



Bump and Vibration

Onboard design capable of meeting the bumps and vibrations as per automotive standards.

C1EE120030

48V-12V/30A DC-DC Converter

SPECIFICATIONS

AC Input

Voltage- range	: 36-59 VDC
Nominal Voltage	: 48 VDC
Input Current	: <13A
Efficiency	: >90%
Inrush Current	: ≤ 30A

DC Output

Voltage	: 14 .2V ± 0.2V
Power	: 400W(Continuous)
current (continuous)	: 28A(Continuous)

Protections

1/P & 0/P Over voltage	: Available
1/P & 0/P under voltage	: Available
1/P & 0/P reverse polarity	: Available
1/P & 0/P Short circuit	: Available
Over temperature protection	: Available
IP Protection	: IP67
EM I/EMC and corrosion compliance	: Available

Environmental

Operating Temperature	: -20 To+ 50° C
-----------------------	-----------------

Mechanical

Dimensions	: L -170mm, W -178 mm, H -82mm
Weight	: 2Kg Appx.

AXIOM ENERGY CONVERSION LTD.

Plot No.207/4&5, Phase-II, IDA, Cherlapally, Hyderabad-500051, Telangana, INDIA.

Toll Free: 1800-572-4748. Mobile: 99590 55158 Email:sales@axiomevproducts.com